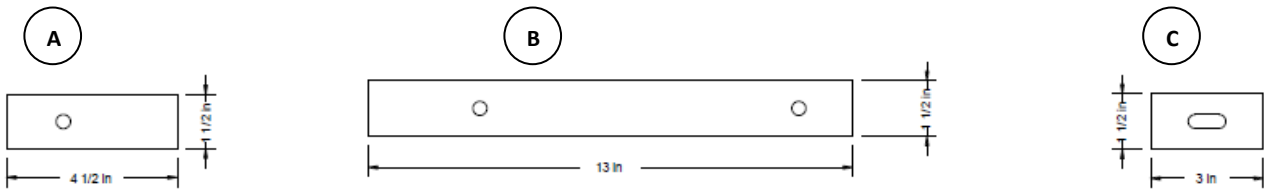


DRAWER KIT for WELDED WORKBENCH

Mounting and Assembly Instructions

The kit comes complete with the following hardware:

| | | | |
|---|----------------------------|---|-----------------------|
| 2 | Front Hanging Brackets (A) | 6 | ¼ x 20 hex-cap screws |
| 2 | Rear Hanging Brackets (B) | 6 | Washers |
| 2 | Rear Sandwich Brackets (C) | 6 | Wing nuts |



ASSEMBLY INSTRUCTIONS:

1. Tip the table forward so it rests on its front edge.
2. Assemble the front bracket (A) to the drawer finger tight. Use the washer on the bolt side, and the wing-nut on the inside of the drawer.
3. Assemble the rear bracket (B) to the drawer finger tight. Use the washer on the bolt side, and the wing-nut on the inside of the drawer.
4. Place the drawer in position on the underside of the table. The Front and rear brackets should be behind the lip on the bottom of the table top as shown below.
5. Tighten the Front Hanging Bracket (A).
6. Assemble the Rear Sandwich Bracket (C) to the Rear Hanging Bracket (B). Use the washer on the bolt side, and the wing-nut on the inside of the drawer. The rear lip on the underside of the table-top should be trapped between the two brackets. Tighten it completely.

